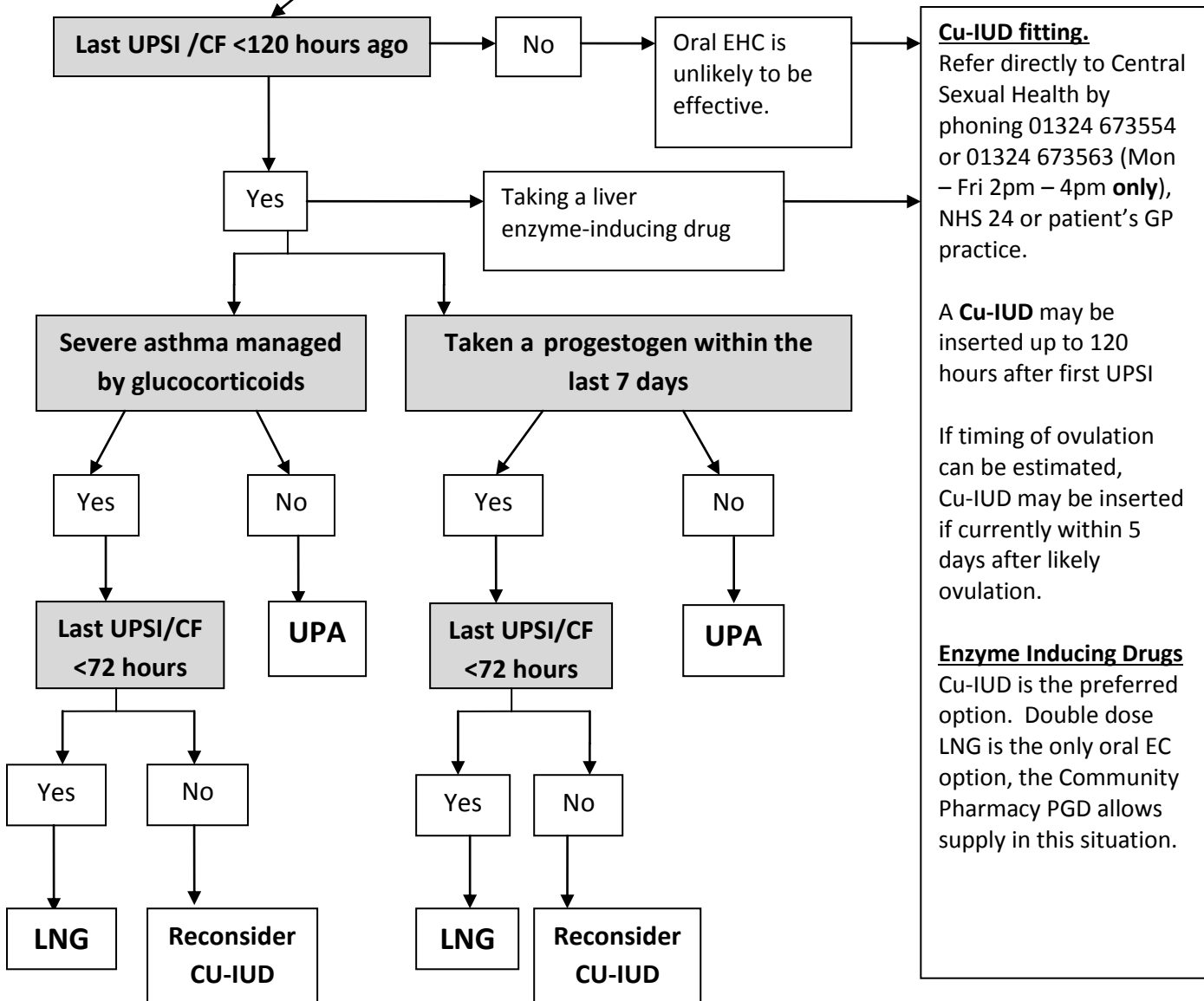


Refer to the Emergency Contraceptive Guidance and Levonorgestrel PGD for full details for exclusions, cautions in use, warnings and additional information

Offer emergency contraception on any day of a natural menstrual cycle

The Cu-IUD is the most effective method of EC. Patients should be advised that oral emergency contraception is unlikely to be effective if ovulation has already occurred. Supply oral EHC even if referred for Cu-IUD



**Cu-IUD fitting.**  
 Refer directly to Central Sexual Health by phoning 01324 673554 or 01324 673563 (Mon – Fri 2pm – 4pm **only**), NHS 24 or patient’s GP practice.

A Cu-IUD may be inserted up to 120 hours after first UPSI

If timing of ovulation can be estimated, Cu-IUD may be inserted if currently within 5 days after likely ovulation.

**Enzyme Inducing Drugs**  
 Cu-IUD is the preferred option. Double dose LNG is the only oral EC option, the Community Pharmacy PGD allows supply in this situation.

Note that oral EHC is unlikely to be effective if taken after ovulation

Cu-IUD	copper intrauterine device	EC	emergency contraception
EHC	emergency hormonal contraception	UPA	ulipristal acetate 30mg
LNG	levonorgestrel 1.5mg	UPSI	unprotected sexual intercourse
CF	contraceptive failure		