



Dental Pain: **Emergency / Urgent**

Emergency

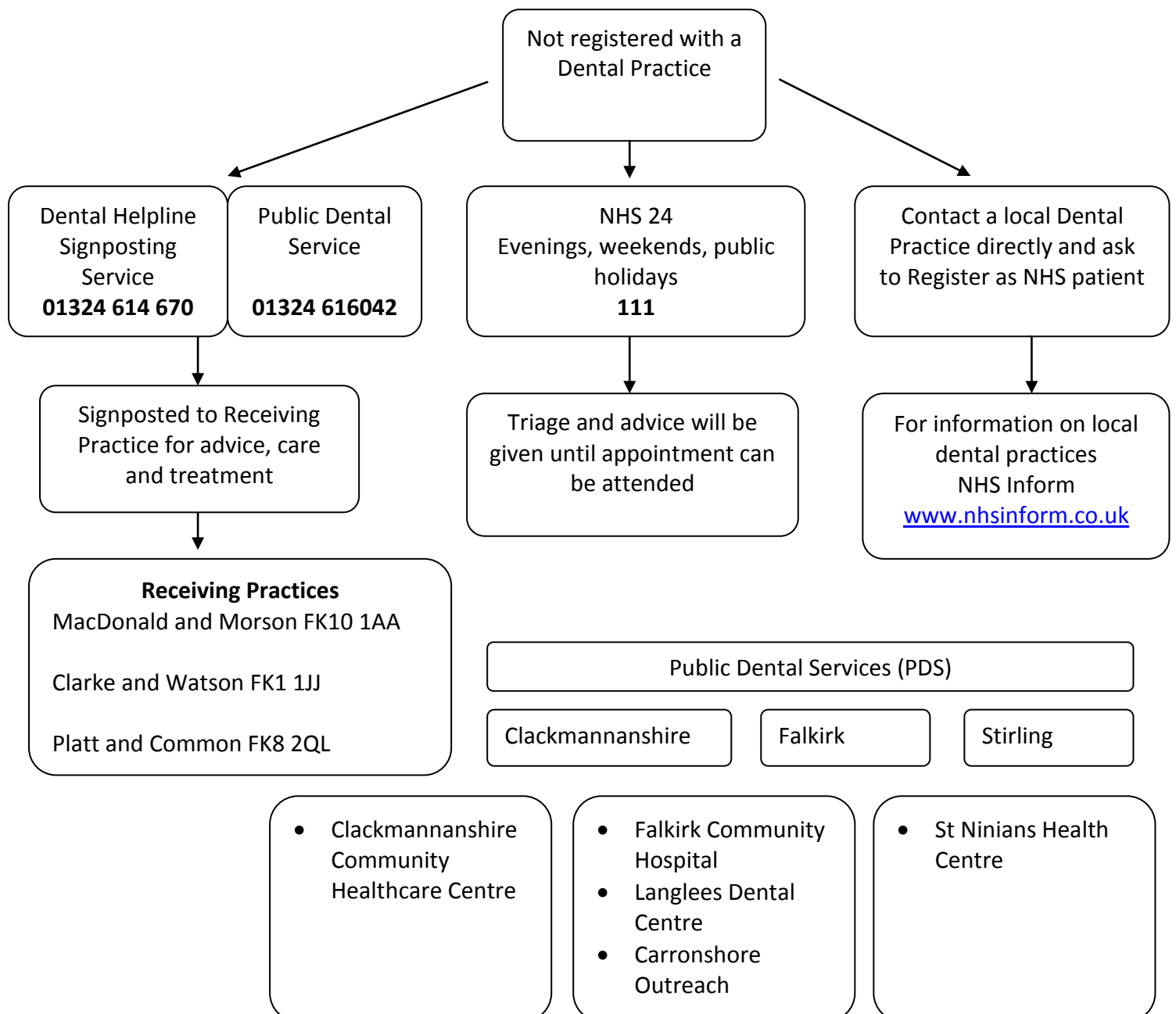
- Facial or dental trauma
- Oral Facial swelling, significant and worsening
- Post extraction bleeding
- Dental Infection

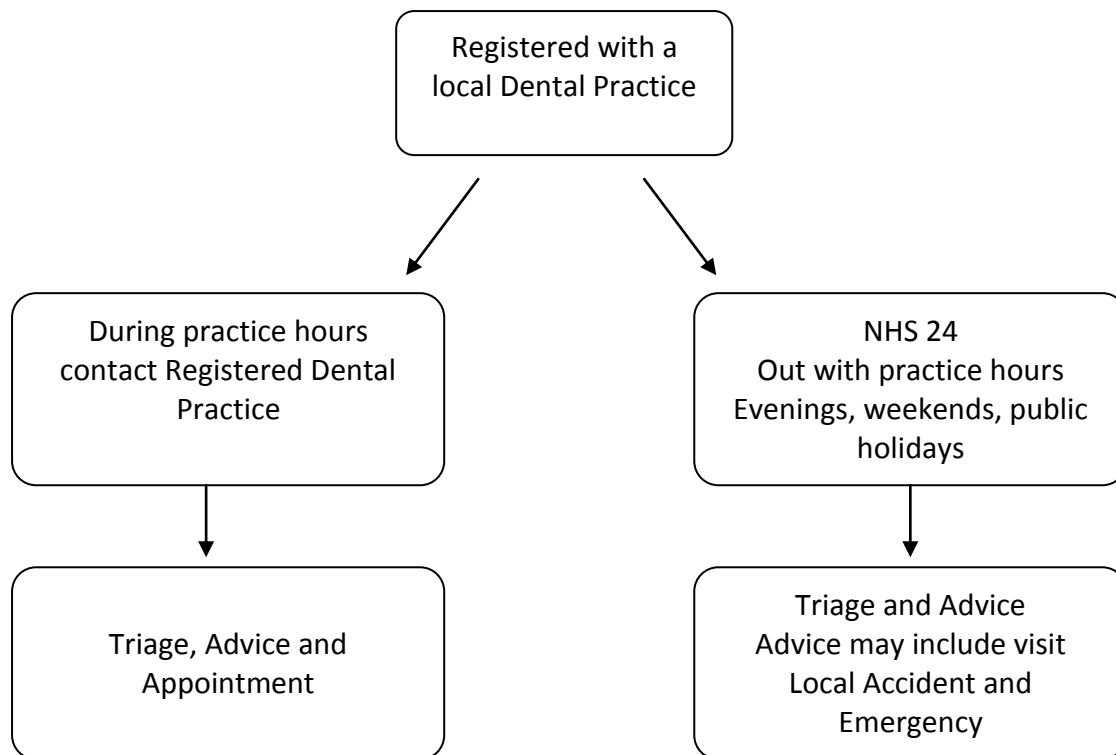
You may be advised to attend the local Accident and Emergency Department

Urgent

- Severe pain
- Mild swelling
- Chronic Infection

You will be advised on how to control your symptoms until your appointment





Charges for Emergency Dental Treatment

Standard NHS charges apply for any dental treatment received. You will not have to pay if you are usually exempt from charges but will need the correct proof with you. For information about exemptions please refer to the leaflet 'A quick guide to Help with Health Costs', more information available at www.nhsinform.co.uk

Exemptions for free NHS Dental Treatment if you qualify under these categories

You are under 18 years of age	Named on an HC2 certificate under NHS Low Income Scheme	You receive or are included in your partner's claim for Income-related Employment and Support Allowance
You are aged 18 in full time education	You receive or are included in your partner's claim for Income Support	You are entitled to, or are named on a valid NHS Tax Credit Exemption Certificate
You are pregnant or have had a baby in the last 12 months	You receive or are included in your partner's claim for Income based Jobseekers Allowance	In receipt of universal tax credit and meet the criteria

Smile4life Staff Contact Information:

Smile4life fv-uhb.smile4life@nhs.net

Administration Support
NHS Forth Valley
t. 01786 433299
e. fv-uhb.smile4life@nhs.net

Oral Health Trainer
NHS Forth Valley
t. 01324 62400 Ext 3934
e. ekidd@nhs.net